

Mozambique T4

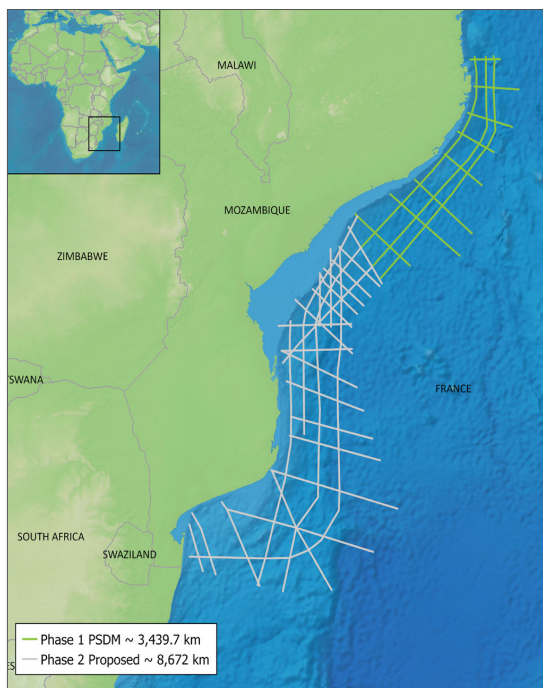
Program Description

The Mozambique T4 program was awarded to ION and WesternGeco by INP in 2018. The 2D survey is a long offset, long record, depth imaged dataset to help address the geological objectives detailed below, and to support the planned 6th License Round.

Phase I constitutes the depth imaging of approximately 3,432 km of existing 2018 2D survey data, with Phase II amounting to approximately 8,650 km of new planned 2D acquisition.

Key Geological Objectives

- To image this narrow yet complex section of the Mozambique margin from continental to oceanic crust and constrain the break-up and crustal architecture and gross margin morphology
- Provide a regional context for the basin, specifically the timing of break-up plus the amount and distribution of magmatism at and prior to break-up
- Develop a regional understanding of the petroleum system and hydrocarbon potential in the Angoche Basin:
 - Distribution of potential source rocks and their likely variability along the margin
 - Develop understanding of likely heatflows through time and space along the margin
- Understand the relationship between the shallow water and deep water depositional systems and hence reservoir potential



KEY COMPONENTS

- Phase I 2D PSDM completed August 2020
- Phase II 2D acquisition – planned
- Continuous survey for regional interpretation, ties with East AfricaSPAN

Contact

Eddie Pharr

Direct +1 281 781 1089

Mobile +1 713 906 0743

Eddie.Pharr@iongeo.com

Schlumberger

Last updated December 6, 2021

About ION

Leveraging innovative technologies, ION delivers powerful data-driven decision-making to offshore energy and maritime operations markets, enabling clients to optimize operations and deliver superior returns. Learn more iongeo.com

