

MESA[®] | Seismic Survey Design Software

NEW RELEASES

MESA 15.1/15.2 – Primary Enhancements

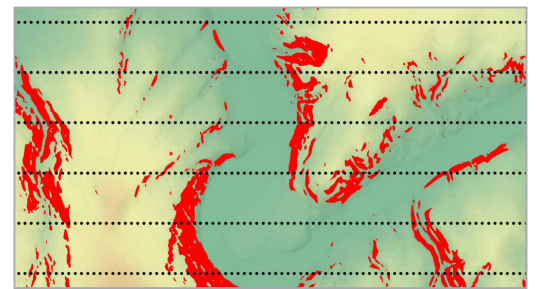
- NORSAR-3D[®] Connector
 - Two-way interface for transferring MESA geometries to NORSAR-3D and importing NORSAR-3D raytracing results to MESA. Support for land, OBS and towed streamer geometries.
- Gator Attribute Interface
 - Facilitate QC of Gator attributes with MESA users in office/field.
 - Out of spec guns, timing errors, sensor errors and misfires.
- Exclusion Zone Resize and Cloning
- Urban Planning Tools
 - Large scale polyline layout of source/receiver lines
- Improved Handling of Multiple Coordinate Sets
 - More efficient import and QC of field updates



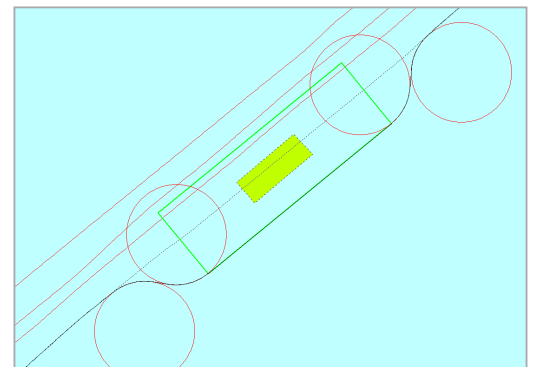
Urban planning: Fine detail editing of individual lines

MESA 16.0

- Shooting Template with Merged Towed Streamer and Fixed Receivers.
 - Combine towed streamer shooting with fixed nodes
- Slope-derived Exclusion Zones
- New Color-scales for Improved Data Comprehension
- Marine Obstacle Avoidance
- 4D Attributes
- Label Shooting Enhancements
- SimSurvey™ Interface
- Decimated layout tool that applies a “jitter” with constrained gaps
- Updated randomization function
- Streaming satellite imagery provided by Airbus (available only with active maintenance)
- Anchor point selection tool for filling regions



Auto calculate polygon exclusions using elevation data



Better tools for creating marine detours

About ION

ION is a technology leader with a strong history of innovation. Leveraging innovative technologies, ION creates value through data capture, analysis and optimization to enhance companies' critical decision-making abilities and returns. Our offerings are focused on improving E&P decision-making, enhancing reservoir management and optimizing offshore operations.