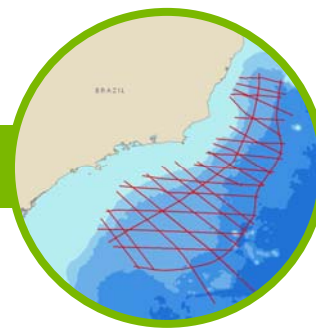


# BrasilSPAN

## INTEGRATED SEISMIC SOLUTIONS



### Program Overview

BrasilSPAN consists of three programs covering entire offshore of Brazil from Foz do Amazonas to Pelotas. The datasets are designed to further our understanding of the petroleum systems in the various geological provinces of Brazil and provide a substrate for new hydrocarbon provinces overlooked in previous datasets.

The three main programs within BrasilSPAN are:

- 1) BrasilSPAN Salt Study – Approximately 12,000km of data covering Santos, Campos and Espirito Santos
- 2) BrasilSPAN Pelotas – Approximately 8,300km of data on Pelotas basin and its transition to Santos
- 3) Greater BrasilSPAN – Approximately 12,000km of data covering Equatorial Atlantic and Atlantic Margin from Foz do Amazonas to Espirito Santos

All three BrasilSPAN programs tie into each other to provide the industry's first regional pre-stack depth framework of all of the major basins in the country. BrasilSPAN datasets have been designed to tie ArgentineSPAN in the South and the West AfricaSPAN datasets across the Atlantic Ocean. This is the first long-offset (10km), long recording (18 sec), deeply imaged (down to 25km using a powerful specially-designed source) dataset to be acquired in Brasil.

BrasilSPAN Status:

1. BrasilSPAN Salt Study – Fully acquired and deliverables Q4 2008
2. BrasilSPAN Pelotas – Acquisition commenced. To be completed by Q4 2008
3. Greater BrasilSPAN – Acquisition to commence Q1 2009

### Program Objectives

- To provide a regional depth framework to promote better understanding of the region's tectonic architecture and basement structure
- To build paleo-tectonic "fits" with corresponding regions in Africa through GXT's unique AfricaSPAN datasets covering Angola to Nigeria
- To develop a comprehensive deep-basin framework and a model for the hydrocarbon potential of rifted continental fragments across Brazil's deepwater provinces and use this relationship to build better outboard models beyond Tupi and Jupiter discoveries
- To develop new plays based on proven and new petroleum systems – provide comprehensive interpretation that includes maps of the area's active petroleum systems, the likely limits of existing plays and the location of new plays
- To promote better understanding of the development of the delta and the potential for new petroleum systems in Brasil's northern basins

### About BasinSPANS™

Integrated Seismic Solutions BasinSPAN™ interpretation packages or "SPANs" provide E&P companies with the ability to better understand the petroleum systems in regions of interest. SPANs are geologically inspired, basin-scale, ultra-deep, seismic data programs acquired and depth-imaged using the most advanced geophysical technology available. They provide upstream companies with the ability to evaluate the geologic evolution, deep basin architecture and depositional and structural histories of entire petroleum systems in the region.

Unlike conventional multi-client seismic surveys, SPAN programs are custom designed in collaboration with GX Technology (an ION Company), regional experts and the O&G companies. Once the program objectives are agreed upon, GXT serves as Project Manager and applies the best survey design, acquisition and processing technologies with a proprietary mindset that adds value and achieves exceptional results. Such in-depth data and the associated interpretation tools greatly assists asset managers with portfolio management and provides significant risk mitigation as they develop exploration and appraisal programs with greater confidence.



## INTEGRATED SEISMIC SOLUTIONS

### Key Components

- 10-kilometer offsets, 18-second record length and a special source designed for optimal, deep imaging
- BrasilSPAN Salt Study now available for early deliverable
- Pelotas acquisition underway – data will be used to generate a thermal model for the basin
- Significant deep basin architecture revealed in BrasilSPAN data! – New information on the rifting architecture and paleo-movement of salt in Santos and Campos

### Deliverables, with Full Participation, Include

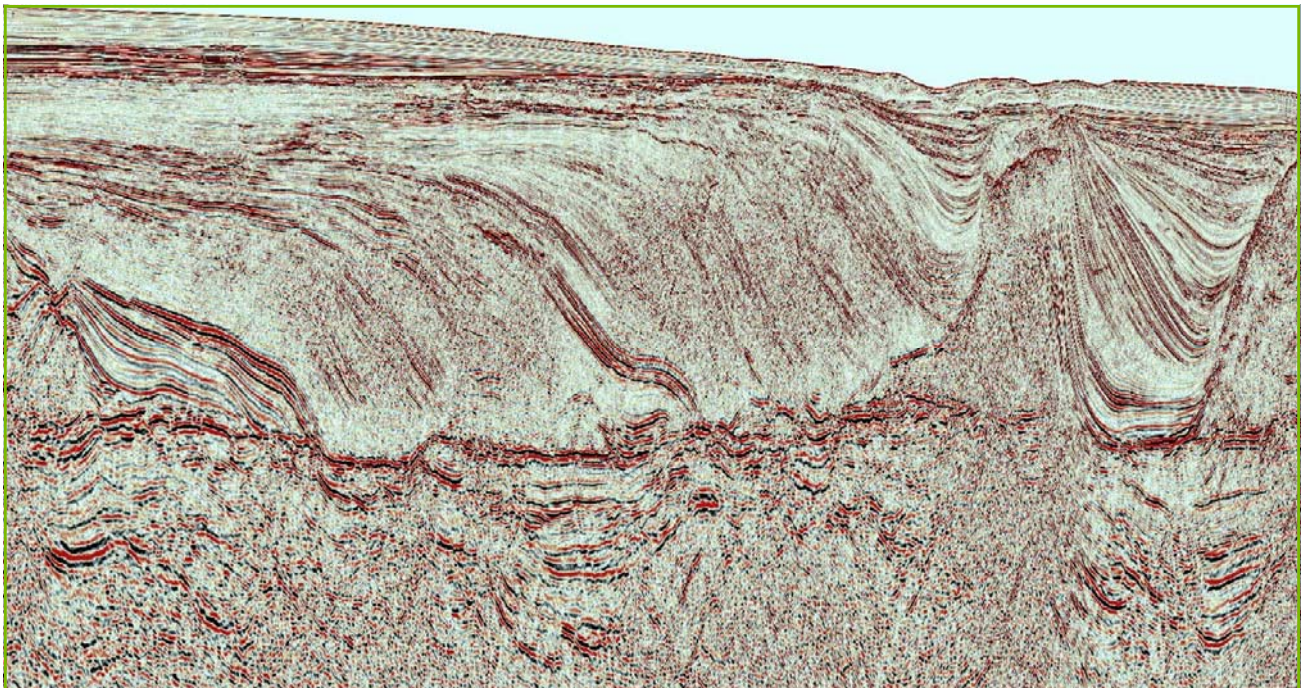
- PreSTM stacks, gathers, and velocity model
- PreSDM stacks and velocity model
- Structural and stratigraphic interpretation
- Acquisition, processing and interpretation reports
- Navigation-merged shot records
- Gravity and magnetic data

#### Contact Details

Sujata Venkatraman  
 Program Manager, Africa & South Asia  
 Mobile: +1 832 647 9564  
 Email: [sujata.venkatraman@iongeo.com](mailto:sujata.venkatraman@iongeo.com)

#### Corporate Office

2105 City West Blvd., Suite 900  
 Houston, TX 77042  
 Phone: +1 713 789 7250  
 Fax: +1 713 789 7201  
 Email: [BasinSPAN@iongeo.com](mailto:BasinSPAN@iongeo.com)



→ Regional Line Through Santos