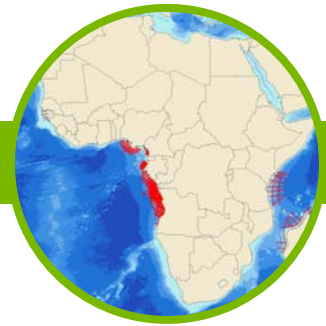


# AfricaSPAN

INTEGRATED SEISMIC SOLUTIONS



## Program Overview

In response to oil and gas companies increasing interest and activity levels in the offshore hydrocarbon provinces of Africa, GXT (a subsidiary of ION Geophysical) designed the AfricaSPAN group of programs to help improve understanding of the petroleum systems in and around the continent. AfricaSPAN provides the industry with its first regionally consistent advanced seismic datasets around Africa — seismic and geologic programs specifically designed to provide better understanding of the multiple, active petroleum systems that exist around the continent. In addition, each of the programs within AfricaSPAN has been designed with the active participation of national and international oil and gas companies and regional experts.

AfricaSPAN programs are:

- NigeriaSPAN – Gulf of Guinea (~5,000km)
- EquatorSPAN – offshore Cameroon and Northern Gabon (~4,300km)
- CongoSPAN I and II – Two phased study of offshore Angola, Congo and Gabon (~27,000km)
- Gabon Deep Tow – Study of Southern Gabon (~1,000km)
- East AfricaSPAN – offshore Madagascar, Kenya, Tanzania, Seychelles and Mozambique (~15,000km)

## Program Objectives

- To advance understanding of the petroleum systems along the western and eastern coasts of Africa
- To improve understanding of current plays and their regional settings
- To provide E&P companies with the data needed to evaluate hydrocarbon prospects around Africa and build potential for new and frontier areas

## Key Components

- Acquisition, processing and imaging parameters and workflows were especially optimized for deep imaging objectives through GX Technology's Image Driven™ expertise
- Enhanced imaging of pre-salt depocenters (CongoSPAN), basement architecture and rift-based tectonic features
- Improved understanding of source rock distribution and subsequent migration pathways
- Ties key structural and depositional features with significant wells
- Interpretation uses well tops from database where available

## About BasinSPANS™

Integrated Seismic Solutions Basin-SPAN™ interpretation packages or "SPANs" provide E&P companies with the ability to better understand the petroleum systems in regions of interest. SPANs are geologically inspired, basin-scale, ultra-deep, seismic data programs acquired and depth-imaged using the most advanced geophysical technology available. They provide upstream companies with the ability to evaluate the geologic evolution, deep basin architecture and depositional and structural histories of entire petroleum systems in the region.

Unlike conventional multi-client seismic surveys, SPAN programs are custom designed in collaboration with GX Technology (an ION Company), regional experts and the O&G companies. Once the program objectives are agreed upon, GXT serves as Project Manager and applies the best survey design, acquisition and processing technologies with a proprietary mindset that adds value and achieves exceptional results. Such in-depth data and the associated interpretation tools greatly assists asset managers with portfolio management and provides significant risk mitigation as they develop exploration and appraisal programs with greater confidence.



## INTEGRATED SEISMIC SOLUTIONS

### Deliverables, with Full Participation, Include

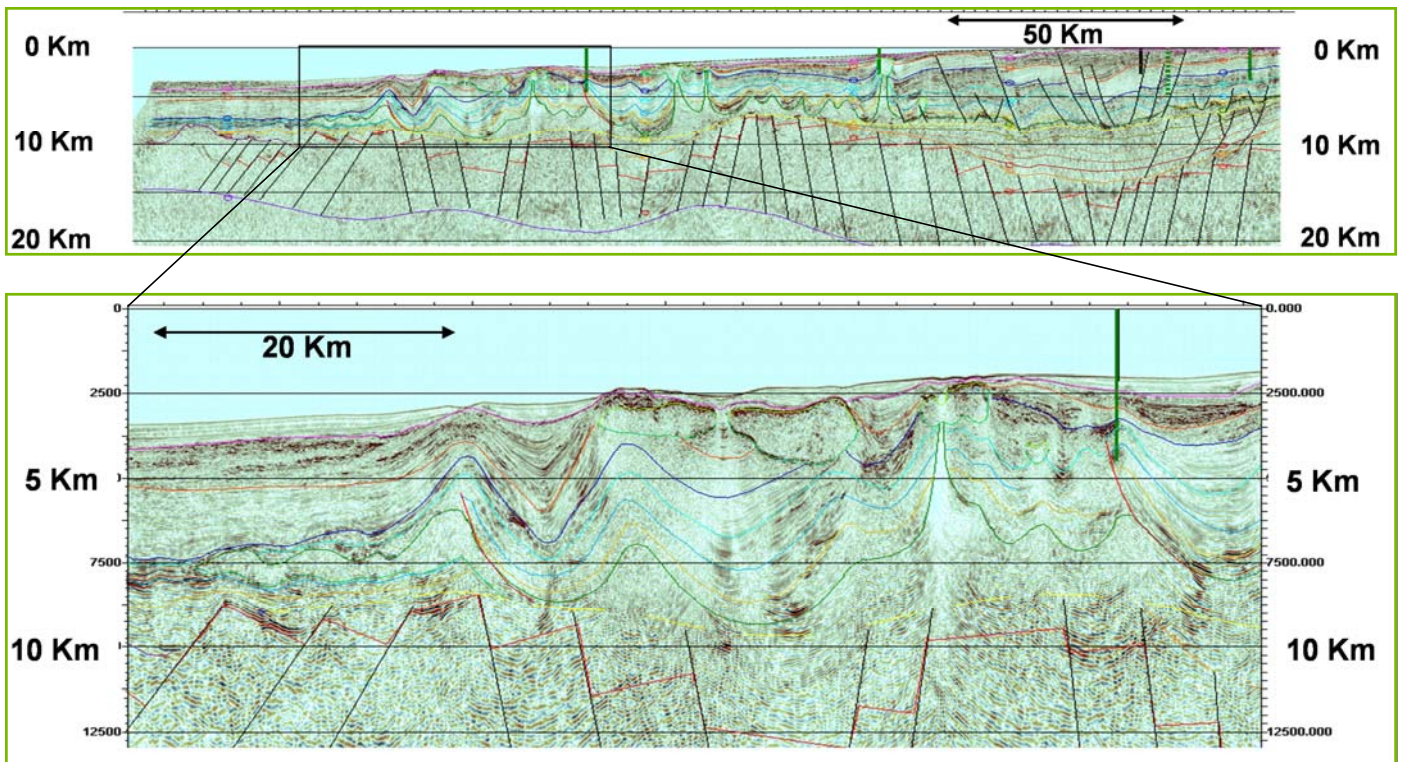
- Navigation merged shot records (SEG Y)
- Final Kirchhoff PreSDM stack (SEG Y)
- Final PreSTM stack, gathers and velocity model (SEG Y)
- Final depth, interval velocity model
- Structure and stratigraphic interpretation
- Gravity and magnetic data
- Final acquisition, processing and interpretation reports (full datasets only)

#### Contact Details

Sujata Venkatraman  
 Program Manager, Africa, Brazil and  
 South Asia  
 Mobile: +1 832 647 9564  
 Email: [sujata.venkatraman@iongeo.com](mailto:sujata.venkatraman@iongeo.com)

#### Corporate Office

2105 City West Blvd., Suite 900  
 Houston, TX 77042  
 Phone: +1 713 789 7250  
 Fax: +1 713 789 7201  
 Email: [BasinSPAN@iongeo.com](mailto:BasinSPAN@iongeo.com)



→ Line 3600, Salt Canopies