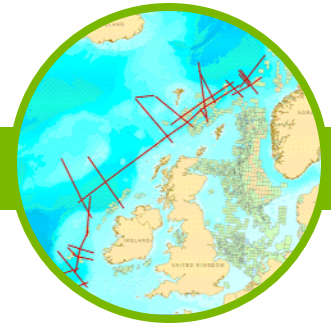


Northeast AtlanticSPAN



INTEGRATED SEISMIC SOLUTIONS

Program Overview

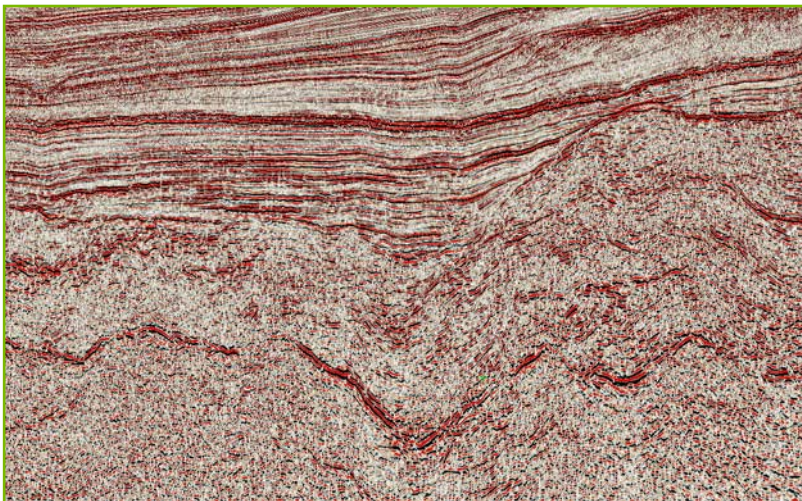
The Northeast AtlanticSPAN is a large regional 2D survey extending from the Porcupine Basin in South West Ireland through the Rockall Basin, the Faroes and Shetland Islands and into the Norway Sector. The Northeast AtlanticSPAN program has been specifically designed to image the less explored areas within the region that are recognized to have hydrocarbon potential below thick basalts.

This survey is expected to provide new insights into the architecture of the Atlantic Margin by increasing the effectiveness of the existing data sets with improved event identification and cross-survey correlation, thus delivering improved, cost-effective interpretation, mitigating geological exploration risk and increasing the venture's probability of success.

The mid-Eocene Caledonia Fan Play has been the only proven play in the vicinity of the study area with structures and sandstone north of 62N yet to be validated. In the absence of recent 3D seismic data or a dense grid of 2D data, it had not been possible to identify and map stratigraphic traps within the area with any degree of certainty or confidence.

Program Objectives

- To provide regional ties across existing seismic surveys and deep exploration wells
- To provide improved imaging of deep structures including: base basalt, intra-basalt reflectors, sub-basalt structures and deep crustal structure including the Moho, across the margin
- To provide improved regional velocity control throughout the margin
- To define ocean-continent transition zone
- To define sediment input points in deep-water Norway
- To complement existing shallow data



→ Example of PSTM dataset from Northeast AtlanticSPAN –Phase 1

About BasinSPANS™

Integrated Seismic Solutions BasinSPANS interpretation packages or "SPANS" provide E&P companies with the ability to better understand the petroleum systems in regions of interest. SPANS are geologically inspired, basin-scale, ultra-deep, seismic data programs acquired and depth-imaged using the most advanced geophysical technology available. They provide upstream companies with the ability to evaluate the geologic evolution, deep basin architecture and depositional and structural histories of entire petroleum systems in the region.

Unlike conventional multi-client seismic surveys, SPAN programs are custom designed in collaboration with GX Technology (an ION Company), regional experts and the O&G companies. Once the program objectives are agreed upon, GXT serves as Project Manager and applies the best survey design, acquisition and processing technologies with a proprietary mindset that adds value and achieves exceptional results. Such in-depth data and the associated interpretation tools greatly assists asset managers with portfolio management and provides significant risk mitigation as they develop exploration and appraisal programs with greater confidence.



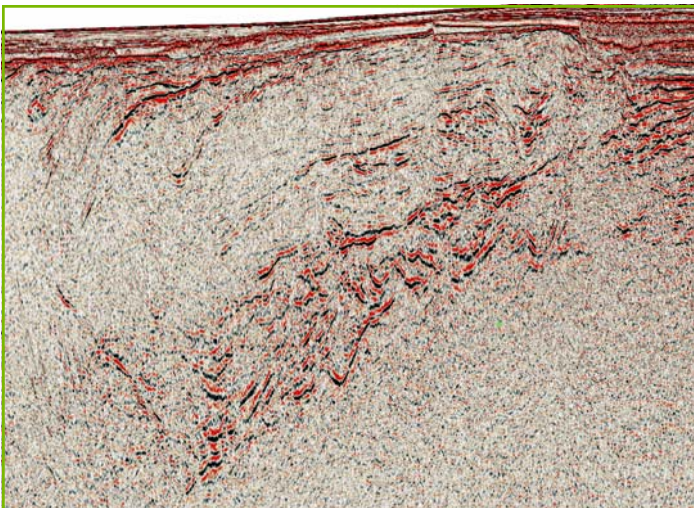
INTEGRATED SEISMIC SOLUTIONS

Key Components

- The only contiguous survey of the Northeast Atlantic margin from Ireland through the Faroes, the Shetland Islands and the Norway sector
- Program design and physical survey layout of over 19,000km were driven by known regional geology with acquisition specifically targeted for sub-basalt extrusion and sill imaging in Rockall, Faroes, Shetland and S. Norway
- Unprecedented deep focus: 18-second records, 9,000-meter cables and a specially designed, large volume source with deep tow configuration
- Integrated geologic and geophysical interpretation providing a consistent regional framework for tying in existing seismic lines with key geologic features, in a basin-wide context
- Improved understanding of depositional fairways and facilitates basin-wide stratigraphic correlation

Deliverables, with Full Participation, Include

- Final Kirchhoff PSDM and PSTM stacks (SEG-Y)
- Final depth interval velocity model (SEG-Y)
- Final PSTM velocity model (SEG-Y)
- Raw navigation merged shot gathers (SEG-Y)
- Final PSTM gathers (SEG-Y)
- Source/receiver and final navigation (UKOOA)
- Gravity and magnetics data
- Structural and stratigraphic interpretation (faults and horizons)
- Acquisition, processing & interpretation reports



→ PSDM line section across northern basalt province showing interval of potential sedimentary rocks below basalt

Contact Details

Paul Keane
 Program Manager, Europe
 Mobile: +47 9938 2111
 Email: paul.keane@iongeo.com

Corporate Office

2105 City West Blvd., Suite 900
 Houston, TX 77042
 Phone: +1 713 789 7250
 Fax: +1 713 789 7201
 Email: BasinSPAN@iongeo.com