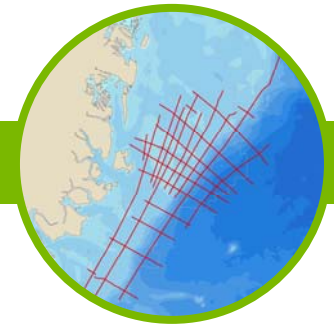


Northeast GreenlandSPAN

INTEGRATED SEISMIC SOLUTIONS



Program Overview

The NE GreenlandSPAN Survey is the latest addition to GX Technology's library of SPAN programs located in the Arctic region. The NE GreenlandSPAN Survey consists of 5,283 km and is designed to cover the East Greenland Rift Basins Province with long offset 2D seismic data, specifically the Danmarkshavn Basins, the Thetis Basin and the northern part of the Northeast Greenland Volcanic Province. A 2008 USGS report placed reserve estimates for areas covered by the NE GreenlandSPAN Survey in the range of 8.9BB of oil, 86.1 TCF of gas and 8.1BB of natural gas liquids.

SPANs are geologically inspired, basin-scale, ultra-deep, seismic data programs acquired and imaged using the most advanced geophysical technology available. SPAN programs enable oil and gas companies to evaluate the geologic evolution, deep basin architecture and the depositional and structural histories of entire petroleum systems like never before.

Program Objectives

- To deliver an accurate and more comprehensive understanding of the geologic structure of the greater East Greenland Rift Basins Province
- To provide a regional 2D seismic framework that spans the area from the South Danmarkshavn Basin to the Northeast Greenland Volcanic Province and eastward into the Thetis Basin
- To provide sufficient aperture and illumination when combined with the appropriate imaging tools to reveal how the complex basin tectonics are controlling the potential petroleum system
 - Extensional structures and stratigraphic traps in submarine fan complexes of the South Danmarkshavn Basin and Northeast Greenland Volcanic Province
 - Tertiary age inversion structures present along the western edge of the South Danmarkshavn Basin
 - Horst block structures separating the Danmarkshavn Basins from the Thetis Basin

Key Components

- Program design and layout are driven by known geology and client input to provide a consistent seismic regional framework that ties into existing seismic lines
- 18 second records, 8,000 meter cables
- Specially designed acquisition technique to record underneath expected ice
- Integrated geologic and geophysical interpretation
- Improved understanding of key geologic features, placing them in a basin-wide context

About BasinSPANS™

Integrated Seismic Solutions BasinSPANS™ interpretation packages or "SPANs" provide E&P companies with the ability to better understand the petroleum systems in regions of interest. SPANs are geologically inspired, basin-scale, ultra-deep, seismic data programs acquired and depth-imaged using the most advanced geophysical technology available. They provide upstream companies with the ability to evaluate the geologic evolution, deep basin architecture and depositional and structural histories of entire petroleum systems in the region.

Unlike conventional multi-client seismic surveys, SPAN programs are custom designed in collaboration with GX Technology (an ION Company), regional experts and the O&G companies. Once the program objectives are agreed upon, GXT serves as Project Manager and applies the best survey design, acquisition and processing technologies with a proprietary mindset that adds value and achieves exceptional results. Such in-depth data and the associated interpretation tools greatly assists asset managers with portfolio management and provides significant risk mitigation as they develop exploration and appraisal programs with greater confidence.



BasinSPANS
Imaged by GXT

[+]

+

INTEGRATED SEISMIC SOLUTIONS



Deliverables, with Full Participation, Include

- Raw navigation merged shot gathers (SEGY)
- Final Kirchhoff PSDM and PSTM stacks (SEGY)
- Final PSDM depth-interval velocity model (SEGY)
- Final PSTM velocity model (SEGY)
- Gravity and magnetics data
- Final navigation
- Structural and stratigraphic interpretations (faults and horizons)
- Final acquisition, processing and interpretation reports

Contact Details

Joe Gagliardi
 Program Manager
 Mobile: +1 832 878 5071
 Email: joe.gagliardi@iongeo.com

Corporate Office

2105 City West Blvd., Suite 900
 Houston, TX 77042
 Phone: +1 713 789 7250
 Fax: +1 713 789 7201
 Email: BasinSPAN@iongeo.com

