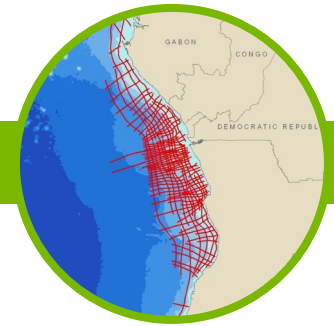


CongoSPAN

INTEGRATED SEISMIC SOLUTIONS



Project Overview

CongoSPAN consists of two regional seismic and geologic programs set in the South Atlantic Aptian salt basins offshore Congo, Angola and Gabon. Conducted in joint cooperation with their respective national oil companies and regulatory agencies, the extensive program was designed with the goal of improving the understanding of the regional geology and the deeper, less explored basins in the area.

The study's two phases total more than 26,000 km of 2D seismic data and provide a dip and strike structural grid related to the major features of the Aptian salt basin. In addition, the program's high-end acquisition parameters and imaging technology delivers unparalleled image quality of deep targets within the survey zone.

As indicated by results from recent licensing rounds and direct block awards, the CongoSPAN dataset has helped revitalize exploration and exploitation of the petroleum provinces in this South Atlantic/West African margin. Future licensing rounds are being planned to take advantage of the new play concepts emerging from the datasets.

Project Objectives

CongoSPAN I:

- To provide greater insight into the post and pre-salt potential
- To identify new petroleum systems
- To lay a foundation for crustal understanding of the margin

CongoSPAN II:

- To provide mapping for risk reduction and improve development in CongoSPAN I
- To provide advanced analysis of features and petroleum potential of plays identified in CongoSPAN I
- To improve our understanding of the paleo-tectonics of the region

Key Components

- Data acquisition using 10,000-meter offsets and 18-second record length
- Study provides understanding of post and pre-salt hydrocarbon potential
- Establishes a foundation for crustal understanding of the margin
- Data reveals new plays and promising potential in the margin
- Study provides an improved understanding of the basement architecture of the region
- CongoSPAN I:
 - Almost 13,000km of data acquired in 2003, project completed in 2004
 - Data processed through pre-stack time and depth migration
 - New re-imaging results from RTM on CongoSPAN I now available!
- CongoSPAN II:
 - Almost 14,000km of data acquired in 2005 and completed in 2006
 - Pre Stack Depth migration used new tomographic techniques developed by GXT to enhance pre-salt imaging

About BasinSPANS™

Integrated Seismic Solutions Basin-SPAN™ interpretation packages or "SPANs" provide E&P companies with the ability to better understand the petroleum systems in regions of interest. SPANs are geologically inspired, basin-scale, ultra-deep, seismic data programs acquired and depth-imaged using the most advanced geophysical technology available. They provide upstream companies with the ability to evaluate the geologic evolution, deep basin architecture and depositional and structural histories of entire petroleum systems in the region.

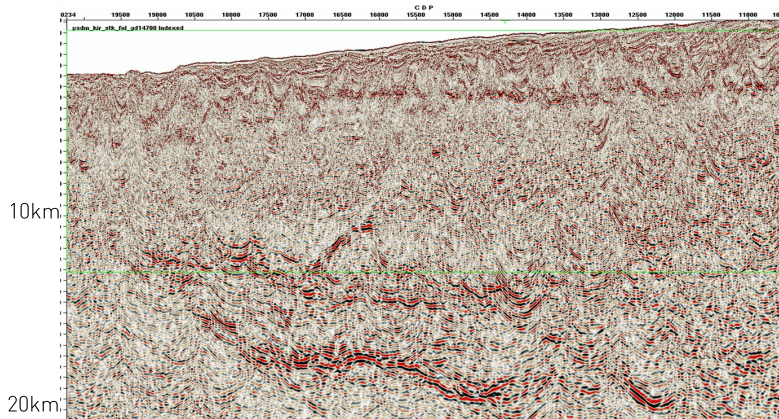
Unlike conventional multi-client seismic surveys, SPAN programs are custom designed in collaboration with GX Technology (an ION Company), regional experts and the O&G companies. Once the program objectives are agreed upon, GXT serves as Project Manager and applies the best survey design, acquisition and processing technologies with a proprietary mindset that adds value and achieves exceptional results. Such in-depth data and the associated interpretation tools greatly assists asset managers with portfolio management and provides significant risk mitigation as they develop exploration and appraisal programs with greater confidence.



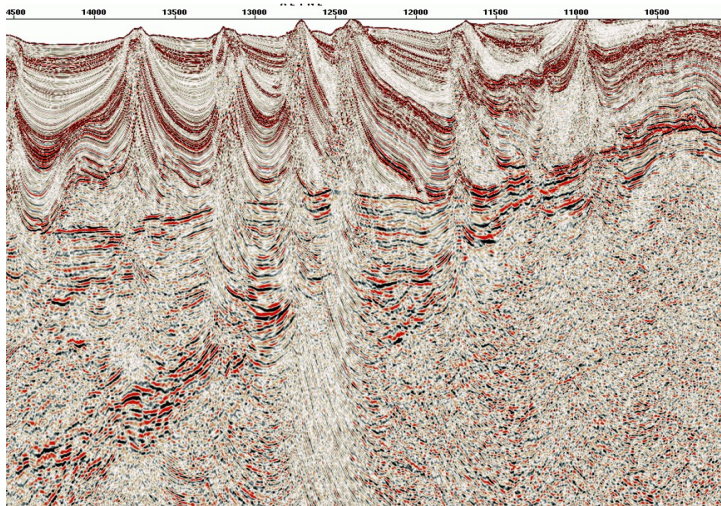
INTEGRATED SEISMIC SOLUTIONS

Deliverables, with Full Participation, Include

- Navigation merged shot records (SEG Y)
- Post-processed Kirchhoff PreSDM stack (SEG Y)
- PreSTM gathers, stack and velocity model (SEG Y)
- Final depth, interval velocity model
- Structural and stratigraphic interpretation
- Gravity and magnetic data
- Final acquisition, processing and interpretation reports



→ Deep Tow line from Southern Gabon showing excellent base of salt and crustal features



→ Line from Kwanza basin showing excellent imaging of sag basin truncating against basement high providing a good Brazilian analog

Contact Details

Sujata Venkatraman
 Program Manager, Africa and South Asia
 Mobile: +1 832 647 9564
 Email: sujata.venkatraman@iongeo.com

Corporate Office

2105 City West Blvd., Suite 900
 Houston, TX 77042
 Phone: +1 713 789 7250
 Fax: +1 713 789 7201
 Email: BasinSPAN@iongeo.com

