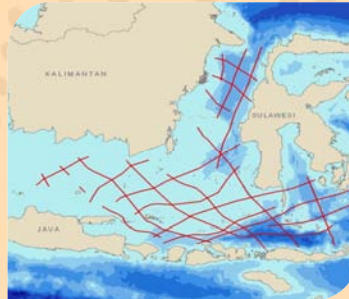


JavaSPAN

PROGRAM OVERVIEW

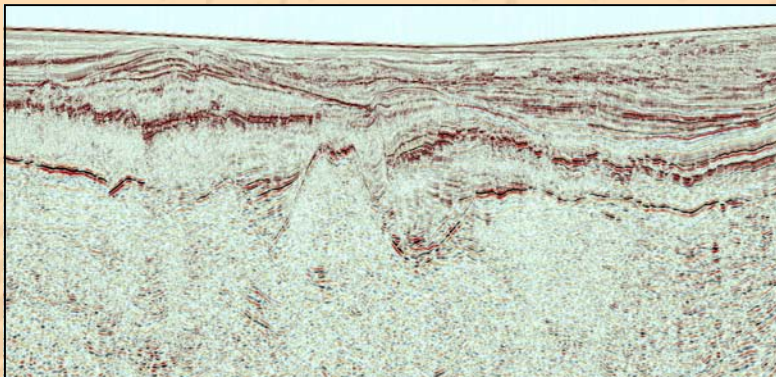
The Indonesian government is encouraging international E&P companies to bid for exploration rights in certain under-explored and under-developed areas that are believed to offer significant hydrocarbon potential. Designed to expand exploration to address Indonesia's increasingly critical need for hydrocarbons, JavaSPAN™ will help oil and gas companies better understand the geology of specific areas considered to be highly prospective.



ION's JavaSPAN is a basin-wide, regional seismic data program and geologic study that extends from Madura Island, East Java, to south of Sulawesi and north into the Makassar Straits. The program provides E&P companies with approximately 10,000 km of new, high-quality, 2D data that was acquired using 9,000 m streamers and 18 sec records. The data was processed by ION's GX Technology group using advanced processing and depth imaging technologies to deliver a structural framework in both time and depth.

PROGRAM OBJECTIVES

- To examine crustal structure that is strongly correlated with bathymetry from the shallow platforms overlying the cratonic basement of Sundaland to the deepwater basins overlying the Cretaceous accretionary basement, inverted half-grabens of the Eocene and Oligocene ages and the ultra-deep water basins overlying the Cenozoic oceanic basement
- To provide insights into the distribution of basement rocks of various ages and lithologies and the control of basement faults on the evolution of Cenozoic extensional and compressional structures



Sample data from JavaSPAN

8 km

About BasinSPANS™

ION's BasinSPANS (SPANS) are geologically inspired, basin-scale seismic data programs acquired and depth-imaged by ION's unmatched GX Technology experts using the most advanced geological and geophysical processing tools available. They provide upstream companies with the ability to evaluate the geologic evolution, deep basin architecture and depositional and structural histories of entire petroleum systems in a region.

Unlike conventional multi-client seismic surveys, BasinSPANS are custom designed in collaboration with ION's GeoVentures group, regional experts and the O&G companies. Once the program objectives are agreed upon, ION serves as project manager and applies the best survey design, acquisition and processing technologies with a proprietary mindset that adds value and achieves exceptional results. Such in-depth data and the associated interpretation tools greatly assists asset managers with portfolio management and provides significant risk mitigation as they develop exploration and appraisal programs with greater confidence.

ION owns one of the most up-to-date seismic data libraries in the industry, consisting of 2D, 3D and full-wave (multicomponent) data from around the world.

PROGRAM OBJECTIVES (Continued)

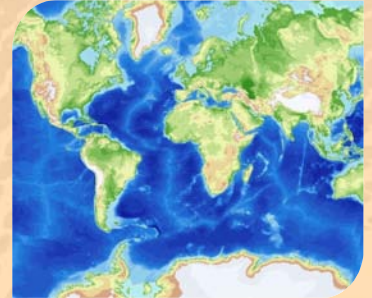
- Improve the understanding of the structural and thermal evolution of source basins and the timing and location of hydrocarbon migration pathways
- To tie key wells to develop a comprehensive tectono-stratigraphic framework
- To improve the understanding of existing plays, uncover new plays and potential, new sedimentary sub-basins in the region

KEY COMPONENTS

- Program design and physical layout driven by known geology
- Transects key geologic features, placing them in a basin-wide context
- Approximately 10,000 km of 2D seismic data acquired using a specifically designed, accurate setup
- Integrated geologic and geophysical interpretation

DELIVERABLES, WITH FULL PARTICIPATION, INCLUDE

- Navigation-merged shot records (SEG-Y)
- Postprocessed Kirchhoff prestack depth migrated stack (SEG-Y)
- Final depth, interval velocity model (SEG-Y)
- Structural and stratigraphic interpretation including digital horizon and fault interpretation and individual line displays
- Final acquisition, processing and interpretation reports, including structural and stratigraphic analysis with line summaries



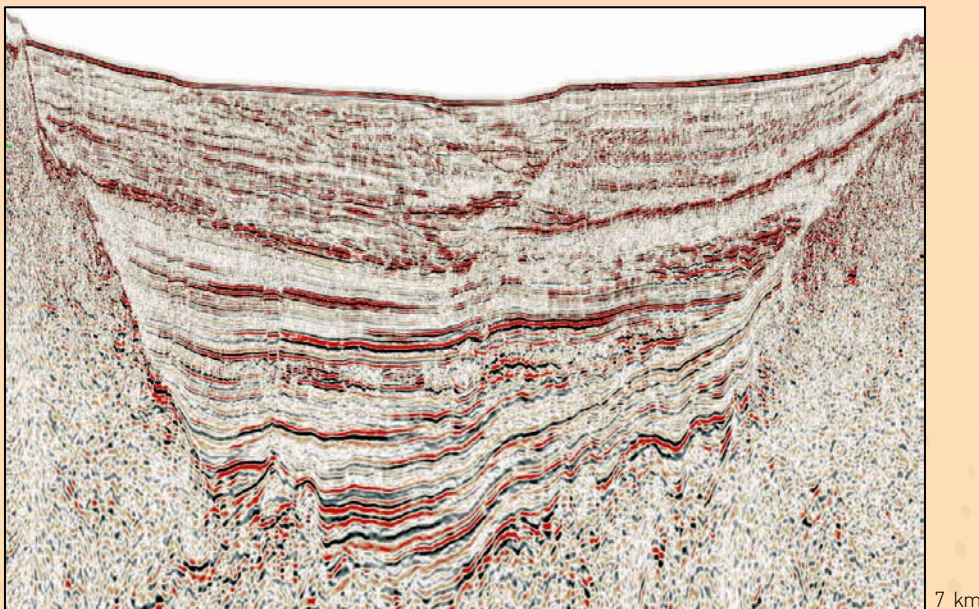
Contact Details

Steve Pickering
Manager,
BasinSPAN Program
Development - Asia Pacific
Mobile: +6 141 798 0234
Email:

steve.pickering@iongeo.com

Corporate Office

2105 City West Blvd., Suite 900
Houston, TX 77042
Phone: +1 713 789 7250
Fax: +1 713 789 7201
Email: BasinSPAN@iongeo.com



Sample data for JavaSPAN