

ColombiaSPAN

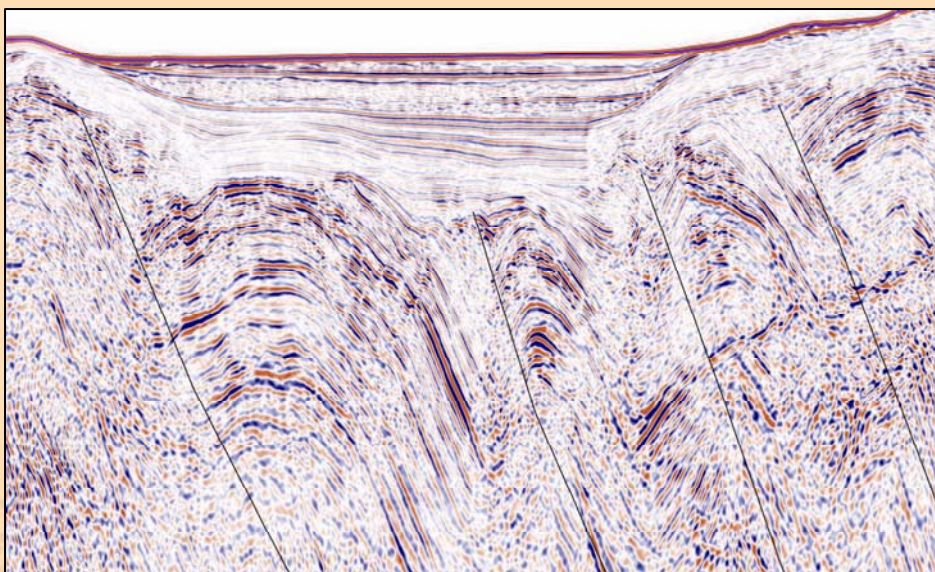
PROGRAM OVERVIEW

The Colombian offshore region has lacked a consistent regional seismic framework, and has been in need of depth imaging to properly target deep shelf reservoirs and identify untapped reserves. ION's ColombiaSPAN™ was designed to deliver greater insight into the geologic evolution and basin architecture of the region.



ColombiaSPAN provides a 2D seismic framework of the Colombian offshore. In effect, this basin-scale, regional seismic program and geologic study extends across the northern margin of South America with over 3,500 km of high-quality, deep-focused, depth-migrated seismic data from ION's GX Technology group.

ColombiaSPAN features 18 sec records, 9,000 m offsets, proprietary multiple attenuation and prestack depth imaging technologies to deliver a premium-quality reference dataset. Entirely new insights to the regional geology are provided in the coherent reflections seen at the unprecedented depth of 17,000 m.



Pre-Stack Depth Image from ColombiaSPAN

About BasinSPANS™

ION's BasinSPANS (SPANS) are geologically inspired, basin-scale seismic data programs acquired and depth-imaged by ION's unmatched GX Technology experts using the most advanced geological and geophysical processing tools available. They provide upstream companies with the ability to evaluate the geologic evolution, deep basin architecture and depositional and structural histories of entire petroleum systems in a region.

Unlike conventional multi-client seismic surveys, BasinSPANS are custom designed in collaboration with ION's GeoVentures group, regional experts and the O&G companies. Once the program objectives are agreed upon, ION serves as project manager and applies the best survey design, acquisition and processing technologies with a proprietary mindset that adds value and achieves exceptional results. Such in-depth data and the associated interpretation tools greatly assists asset managers with portfolio management and provides significant risk mitigation as they develop exploration and appraisal programs with greater confidence.

ION owns one of the most up-to-date seismic data libraries in the industry, consisting of 2D, 3D and full-wave (multicomponent) data from around the world.

PROGRAM OBJECTIVES

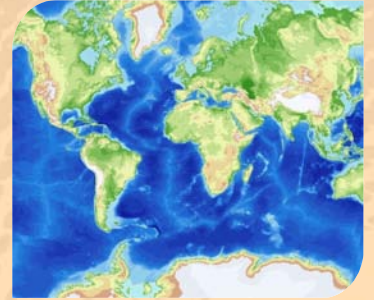
- To deliver superior insight into the geologic evolution and basin architecture of the region
- To provide a consistent regional seismic framework for the waters off the Colombian coast
- To properly target deep shelf reservoirs and help identify untapped reserves

KEY COMPONENTS

- Unprecedented deep focus - 18 sec records, 9,000 m offsets
- The region's first depth-imaged seismic dataset, providing the basis for a more accurate understanding of the regional geology and basin architecture
- Enhanced imaging of potential reservoir facies
- Improved understanding of the distribution of Cretaceous and Tertiary source rocks
- Ties and transects key structural and depositional features and important wells
- Produces the basic interpretive input required by quantitative basin models

DELIVERABLES, WITH FULL PARTICIPATION, INCLUDE

- Navigation-merged shot records (SEG-Y)
- Post-processed Kirchhoff PreSDM and PreSTM stack (SEG-Y)
- Final PSDM depth, interval velocity model (SEG-Y)
- Digital horizon and fault interpretation
- Individual line displays annotated with interpretation, wells, basins and fields
- Structural interpretation, analysis and line summaries



Contact Details

Piers Gormly
Program Manager, Latin America
Mobile: +1 281 221 2176
Email: piers.gormly@iongeo.com

Corporate Office

2105 City West Blvd., Suite 900
Houston, TX 77042
Phone: +1 713 789 7250
Fax: +1 713 789 7201
Email: BasinSPAN@iongeo.com