

# CaribeSPAN

## PROGRAM OVERVIEW

ION's CaribeSPAN™ is a basin-scale, regional seismic program and geologic study that images the offshore areas of the southern Caribbean and the northern margin of South America with ~10,500 km of high-quality, deep-focus, depth-migrated seismic data. The program's coverage now includes Trinidad, Tobago, Grenada, Guyana, and Suriname. As the only basin-wide, deep-imaging seismic dataset available for the region, CaribeSPAN has been used extensively by oil companies participating in recent bid rounds in Trinidad and Tobago — and interest in the region has never been higher.



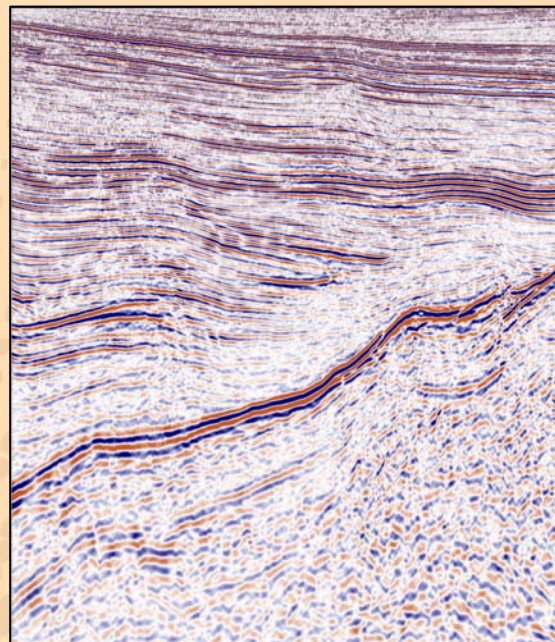
The CaribeSPAN program layout, designed with the active participation of oil companies and geologists with expertise in the region, features best acquisition, processing and imaging technologies by ION's GX Technology (GXT) group. The program's 18 sec records, 9,000 m offsets and proprietary multiple attenuation and prestack depth-imaging capabilities deliver a reference dataset of the highest quality. Coherent reflections seen at an unprecedented depth of 17,000 m provide entirely new insights into the regional geology.

## PROGRAM OBJECTIVES

- To better understand the regional geology of the area's less explored basins
- To provide oil and gas companies participating in bid rounds in Trinidad and Tobago with an analytical tool and added insight into the region's prospectivity

Pre-Stack Depth Image from Trinidad

18 km



## About BasinSPANS™

ION's BasinSPANS (SPANS) are geologically inspired, basin-scale seismic data programs acquired and depth-imaged by ION's unmatched GX Technology experts using the most advanced geological and geophysical processing tools available. They provide upstream companies with the ability to evaluate the geologic evolution, deep basin architecture and depositional and structural histories of entire petroleum systems in a region.

Unlike conventional multi-client seismic surveys, BasinSPANS are custom designed in collaboration with ION's GeoVentures group, regional experts and the O&G companies. Once the program objectives are agreed upon, ION serves as project manager and applies the best survey design, acquisition and processing technologies with a proprietary mindset that adds value and achieves exceptional results. Such in-depth data and the associated interpretation tools greatly assists asset managers with portfolio management and provides significant risk mitigation as they develop exploration and appraisal programs with greater confidence.

ION owns one of the most up-to-date seismic data libraries in the industry, consisting of 2D, 3D and full-wave (multicomponent) data from around the world.

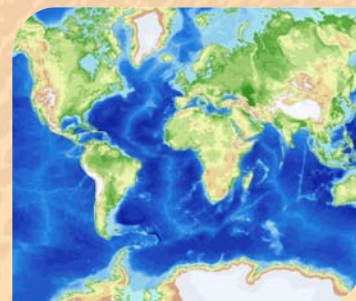
## KEY COMPONENTS

- Unprecedented deep focus: 18 sec records, 9,000 m offsets
- Proprietary, industry-leading multiple attenuation
- Area's first regional, depth-imaged seismic dataset that provides the basis for a more accurate understanding of the regional geology and basin architecture
- Enhanced imaging of potential reservoir facies
- Improved understanding of the distribution of Cretaceous and Tertiary source rocks
- Better delineation of the location and nature of plate boundaries and crustal types
- Ties and transects key structural and depositional features and important wells
- Produces the basic interpretive input required by quantitative basin models
- Complements ION's Trinidad dataset which has been reprocessed by GXT

## DELIVERABLES, WITH FULL PARTICIPATION, INCLUDE

- Navigation-merged shot records (SEG-Y)
- Kirchhoff PreSDM and PreSTM stacks (SEG-Y)
- Final depth, interval velocity model (SEG-Y)
- Structural and stratigraphic interpretation (horizons and faults)
- Individual line displays annotated with interpretation, wells, basins and fields
- Final acquisition, processing and interpretation reports

*The CaribeSPAN PSDM dataset will be re-imaged using the latest GXT imaging tools for velocity model building and migration. Expected delivery: Q2 2012.*



### Contact Details

Piers Gormly  
Program Manager  
Mobile: +1 281 221 2176  
Email: [piers.gormly@iongeo.com](mailto:piers.gormly@iongeo.com)

### Corporate Office

2105 City West Blvd., Suite 900  
Houston, TX 77042  
Phone: +1 713 789 7250  
Fax: +1 713 789 7201  
Email: [BasinSPAN@iongeo.com](mailto:BasinSPAN@iongeo.com)