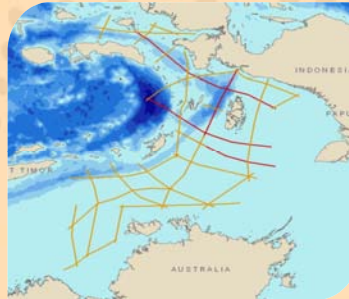


ArafuraSPAN

PROGRAM OVERVIEW

ION's ArafuraSPAN™ survey, located in the Arafura Sea of Eastern Indonesia, stretches from Seram and around the Banda/Tanimbar Arch into the Bonaparte Basin of the Northern Territories of Australia. Boasting an extreme range in water depths, the program covers the very shallow to deepest parts of the Arafura Sea.



This revolutionary survey provides a step change in data quality and utilizes the best acquisition, processing, and imaging technologies from ION's GX Technology group. The program aims to address the difficult imaging issues associated with the region, enabling an increased understanding of the geological development of the basin. Designed with the active participation of oil companies and geologists with expertise in the region, the program layout strategically transects the massive Tangguh and Masela gas fields. This area has been featured in the 2008 and 2009 bid areas proposed by MIGAS, and is the subject of resurgent interest by oil companies.

PROGRAM OBJECTIVES

- Better understand the Mesozoic section specifically Jurassic Sandstone reservoirs from the Bonaparte Basin, through the Banda Arch/Arafura Sea up to the discoveries in Tanggu offshore Irian
- Deliver new insights into the regional architecture
- Examine new and existing play types
- Better understand general source, structure, reservoir and seal character
- Establish total sediment thickness and regional stratigraphic framework
- Tie Key Wells

KEY COMPONENTS

- Program design and layout are driven by known geology and client input providing a consistent seismic regional framework that ties into existing seismic lines
- 18 sec records, 9,000 m streamer
- Integrated geologic and geophysical interpretation
- Improved understanding of key geologic features, placing them in a basin-wide context

About BasinSPANS™

ION's BasinSPANS (SPANS) are geologically inspired, basin-scale seismic data programs acquired and depth-imaged by ION's unmatched GX Technology experts using the most advanced geological and geophysical processing tools available. They provide upstream companies with the ability to evaluate the geologic evolution, deep basin architecture and depositional and structural histories of entire petroleum systems in a region.

Unlike conventional multi-client seismic surveys, BasinSPANS are custom designed in collaboration with ION's GeoVentures group, regional experts and the O&G companies. Once the program objectives are agreed upon, ION serves as project manager and applies the best survey design, acquisition and processing technologies with a proprietary mindset that adds value and achieves exceptional results. Such in-depth data and the associated interpretation tools greatly assists asset managers with portfolio management and provides significant risk mitigation as they develop exploration and appraisal programs with greater confidence.

ION owns one of the most up-to-date seismic data libraries in the industry, consisting of 2D, 3D and full-wave (multicomponent) data from around the world.

DELIVERABLES, WITH FULL PARTICIPATION, INCLUDE

- Raw navigation merged shot gathers (SEGY)
- Final Kirchhoff PSDM and PSTM stacks (SEGY)
- Final PSDM depth-interval velocity model (SEGY)
- Final PSTM velocity model (SEGY)
- Gravity and magnetics data
- Structural and stratigraphic interpretations (faults and horizons)
- Final acquisition, processing and interpretation reports



Contact Details

Steve Pickering
Program Manager
Mobile: +61 417 980 234
Email:

steve.pickering@iongeo.com

Corporate Office

2105 City West Blvd., Suite 900
Houston, TX 77042
Phone: +1 713 789 7250
Fax: +1 713 789 7201
Email: BasinSPAN@iongeo.com

